

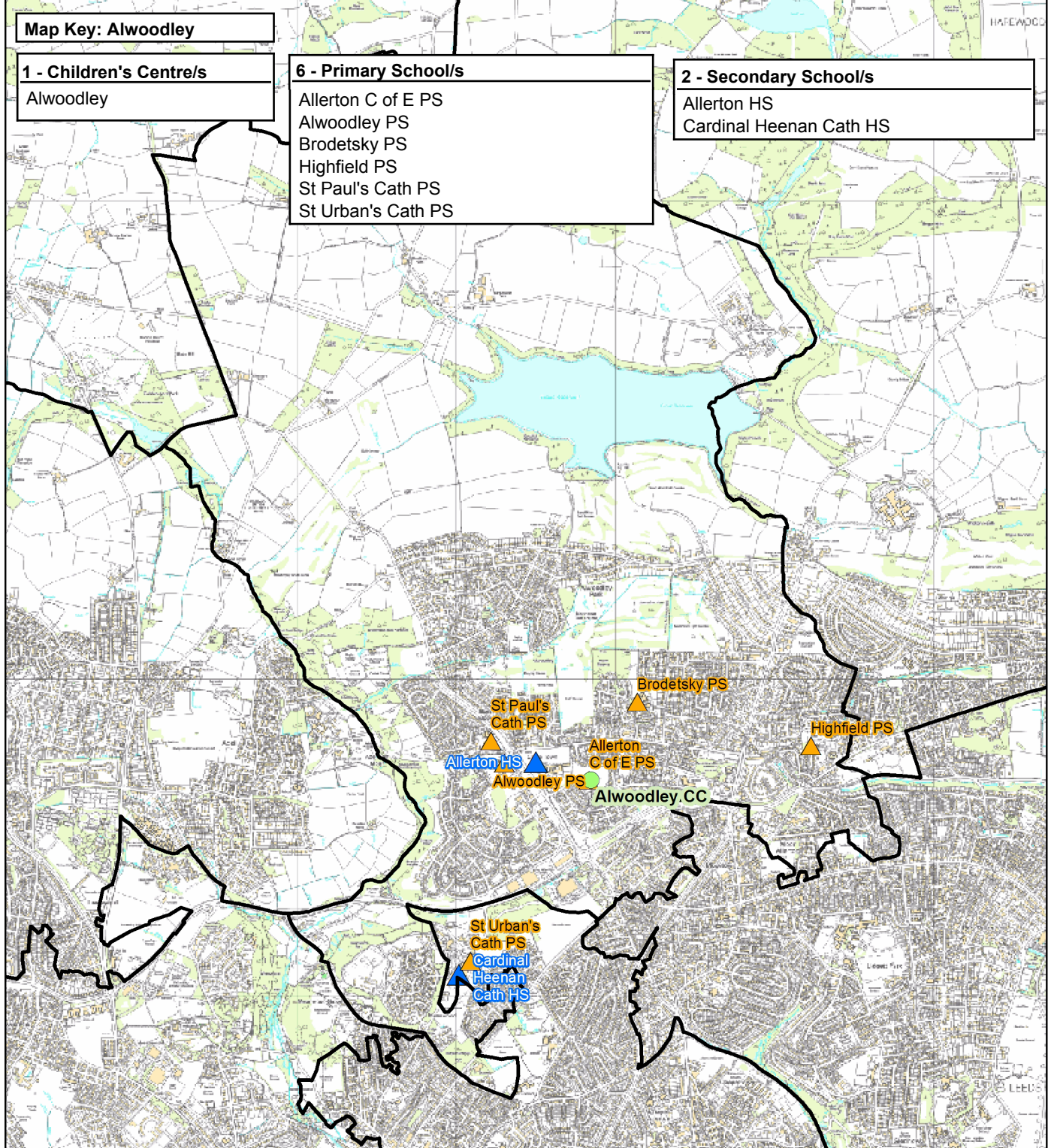
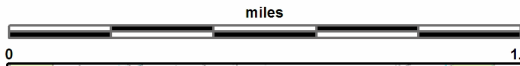
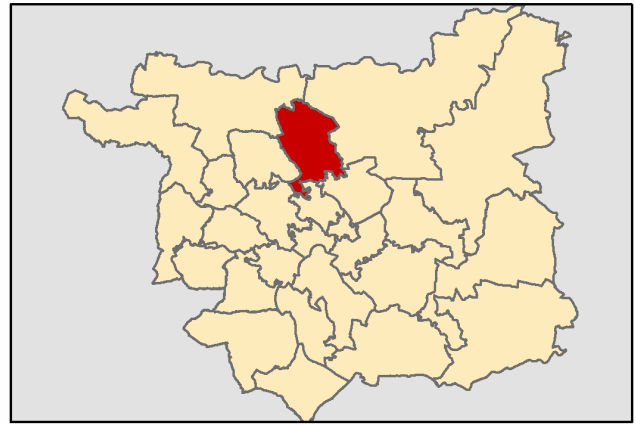
Alwoodley

This report was produced by the Children's Performance Service on 01/06/2012. The information in these overviews are based on the cluster data profile version 5.12.

For more information telephone 0113 39 50701 or email educ.pmi@leeds.gov.uk or visit:

www.leedsinitiative.org/ClusterDataProfile.aspx

The map to the right gives the position of the cluster in Leeds. The map below shows the location of the Children's Centres, Primary and Secondary Schools in the cluster.



Cluster Overviews key**Data Period:**

The codes in the key to the right are for the time periods that the data in these reports cover. They will appear next to all data sets.

Academic Year
Calendar Year
Financial Year
Snapshot
Other

DP:A
DP:C
DP:F
DP:S
DP:O

Cluster Overview

Data Source: January School Census					DP: S	Data Source: January School Census					DP: S
Primary Schools		DFE	Total Number on roll			Secondary Schools		DFE	Total Number on roll		
			2010	2011	2012			2010	2011	2012	
Allerton C of E Primary School	3931		208	247	322	Allerton High School	4032	1135	1117	1148	
Alwoodley Primary School	2436		496	500	499	Cardinal Heenan	4751	903	917	917	
Brodetsky Primary School	3915		259	247	262	Catholic High School					
Highfield Primary School	2438		324	334	349	Total		2038	2034	2065	
St Paul's Catholic PS	3378		203	202	209						
St Urban's Catholic PS	3373		209	208	210						
Total			1699	1738	1851						

Data Source: Children's Services - Feb 2012		DP: S
Children's Centre reach area registration for families of children aged 0-5		% Registered
Cluster		42.56
Wedge		59.28
Leeds all		60.23

Data Source: Children's Services	
Children's Centre	Ofsted ID
Alwoodley	

Data Source: The office of National Statistics population mid-year estimates										DP: S
Population Estimates	0-15			Working Age			60/65+			
	2008	2009	2010	2008	2009	2010	2008	2009	2010	
Cluster	3929	3872	3943	13644	13699	13852	4887	4902	4933	
Wedge	40736	40931	41233	132341	133770	135300	37146	37313	37640	
Leeds all	132741	133396	134493	516578	522769	531036	129937	131536	133240	

Data Source: NHS Leeds													DP: S
Under Fives	September 2010						September 2011						
	0-1	1-2	2-3	3-4	4-5	Total	0-1	1-2	2-3	3-4	4-5	Total	
Cluster	312	274	275	252	289	1402	293	315	266	273	265	1412	
Wedge	3177	3061	3042	2929	2892	15101	3041	3163	3021	2987	2942	15154	
Leeds all	10202	9848	9478	9195	9113	47836	9996	10173	9787	9438	9319	48713	

Data Source: January School Census												DP: S
Percentage of pupils who are:	Black and Minority Ethnic			English as an Additional Language			Free School Meal Eligible			Special Education Needs		
	2010	2011	2012	2010	2011	2012	2010	2011	2012	2010	2011	2012
Primary												
Cluster school	32.6	33.5	31.8	15.8	16.5	15.1	12.1	12.6	12.9	10.1	9.9	10.2
Cluster residence	33.8	35.0	34.1	16.7	18.2	17.1	10.4	11.6	12.6	10.4	10.6	10.4
Wedge school	41.6	42.9	44.0	27.2	28.2	28.9	25.0	25.2	24.7	19.5	19.9	18.5
Total primary	23.6	24.8	26.4	15.8	16.5	17.1	21.5	22.2	22.0	17.8	17.8	17.4
Secondary												
Cluster school	32.2	32.4	34.8	18.6	18.5	18.4	13.7	15.2	14.7	18.3	17.6	15.1
Cluster residence	29.1	29.4	30.1	14.7	14.6	14.4	12.9	14.5	13.9	20.2	17.8	15.3
Wedge school	37.5	39.2	41.1	19.5	17.3	19.8	23.2	23.9	24.2	23.9	25.6	22.1
Total secondary	18.6	19.4	20.4	10.4	10.0	11.1	19.0	19.4	19.5	21.4	20.4	19.0
Leeds all	21.4	22.5	23.9	13.4	13.7	14.6	20.6	21.1	21.1	20.0	19.6	18.7

Data Source: HM Revenue and Customs - taken on 31st August 2007-2009											DP: S
Child Poverty	Number of children (under 16) in families in receipt of CTC or IS/JSA			Number of children (all ages) in families in receipt of CTC or IS/JSA			Number of children in poverty, by age of youngest child, 2009				
	2007	2008	2009	2007	2008	2009	0-4	5-10	11-15	16-19	
Cluster	495	470	460	580	545	550	260	150	105	35	
Wedge	11340	10850	10970	12700	12220	12500	6540	3560	1850	550	
Leeds all	30235	29700	31030	33690	33300	34965	18720	9640	5115	1490	

Data Source: Children's Services - Summer Term 2011					DP: S	
Nursery Education Grant Claims	Number of eligible children	Number of: Claims by childcare setting			Resident Claims	Non Resident Claims
Cluster	417		263		183	81
Leeds all	14500		13851		9704	4148

Data Source: January School Census and 2010 Index of Multiple Deprivation										DP: S
IMD % of pupils resident in most deprived areas	3% most deprived			10% most deprived			20% most deprived			
	10	11	12	10	11	12	10	11	12	
Primary										
Cluster school	0.5	0.3	0.3	20.4	20.3	19.9	28.3	28.5	29.2	
Cluster residence	0.0	0.0	0.0	22.3	23.3	24.0	31.0	32.5	34.2	
Wedge school	16.7	15.3	15.5	44.8	43.2	43.4	53.3	53.2	53.8	
Total primary	8.2	8.4	8.3	28.1	27.1	27.3	36.6	37.6	38.0	
Secondary										
Cluster school	4.6	3.8	4.5	24.6	23.7	24.2	34.1	34.8	34.2	
Cluster residence	0.0	0.0	0.0	28.7	28.9	27.5	38.6	38.2	36.6	
Wedge school	14.2	13.8	14.4	39.1	38.8	39.4	49.4	49.9	50.4	
Total secondary	7.0	7.5	7.6	24.0	23.5	23.8	32.3	33.5	33.6	
Leeds all	7.7	8.0	8.0	26.4	25.7	25.9	34.8	35.9	36.2	

Data Source: January School Census and CACI ACORN											DP: S
KEY: Wealthier Achievers(WA), Urban Prosperity (UP), Comfortably Off (CO), Moderate Means (MM), Hard Pressed (HP)											
Percentage of pupils in each ACORN category	2011					2012					
	WA	UP	CO	MM	HP	WA	UP	CO	MM	HP	
Primary											
Cluster school	39.1	5.9	26.2	1.0	27.0	38.4	5.9	26.5	0.6	28.1	
Cluster residence	41.0	3.0	26.7	0.0	29.2	39.6	2.4	26.9	0.0	31.1	
Wedge school	19.9	9.4	19.5	16.8	33.6	19.4	9.2	19.7	16.7	34.1	
Total primary	15.4	5.9	27.8	15.8	34.3	15.0	6.0	27.7	15.9	34.6	
Secondary											
Cluster school	31.6	8.3	26.9	3.6	29.1	31.0	7.8	27.7	4.1	29.1	
Cluster residence	40.0	3.0	21.1	0.0	35.7	38.9	3.6	23.1	0.0	34.4	
Wedge school	19.0	8.5	21.3	16.2	34.2	18.7	8.8	21.2	16.0	34.7	
Total secondary	17.1	5.2	29.7	14.7	32.5	16.9	5.3	29.8	14.7	32.6	
Leeds all	16.1	5.6	28.5	15.4	33.6	15.8	5.7	28.5	15.4	33.8	

Data Source: DWP information Directorate													DP: F
KEY: Job Seekers Allowance (JSA), Incapacity Benefit (IB), Lone Parent Benefit (LPB), Total Out of Work (TOW)													
Unemployment Percentage of working age people in receipt of:	2009				2010				2011				
	JSA	IB	LPB	TOW	JSA	IB	LPB	TOW	JSA	IB	LPB	TOW	
Cluster	3.3	5.9	1.1	10.7	3.3	5.8	1.1	10.6	3.3	5.8	0.9	10.4	
Wedge	5.2	6.8	2.5	15.0	5.2	6.8	2.2	14.8	5.2	6.8	2.0	14.6	
Leeds all	4.4	5.9	1.8	12.6	4.3	5.8	1.7	12.3	4.2	5.8	1.5	12.1	

Data Source: AXCIOM Lifestyle Survey 2009-2011													DP: S					
	Property type by %									Length of residence by %								
	Owned			Rented - Council			Rented - Private			Less than 1 year			2-5 years			More than 5 years		
	09	10	11	09	10	11	09	10	11	09	10	11	09	10	11	09	10	11
Cluster	66.2	66.0	33.5	21.4	21.7	58.6	12.4	12.3	0.1	4.6	7.6	2.8	16.0	16.4	17.2	79.4	76.0	80.1
Wedge	58.9	59.1	44.4	25.7	25.8	58.7	15.4	15.2	0.0	5.8	7.1	4.4	19.0	18.0	17.6	75.2	74.9	78.1
Leeds all	61.5	61.6	39.0	24.0	23.9	61.2	14.5	14.6	0.0	7.9	8.1	5.1	20.3	20.0	18.5	71.9	71.9	76.4
Income by %	<10k			10-20k			20-30k			30-40k			40-50k			50k+		
	09	10	11	09	10	11	09	10	11	09	10	11	09	10	11	09	10	11
Cluster	13	14	13	15	13	18	17	12	16	19	27	19	16	18	16	20	16	18
Wedge	19	20	17	21	20	25	15	13	15	15	17	17	16	15	13	15	15	13
Leeds all	20	18	18	21	20	23	16	15	16	15	18	17	14	13	13	14	16	14
Struggling with payments by %	Food									Bills			Mortgage					
				09	10	11				09	10	11						
Cluster				11.7	9.0	6.0				12.1	10.0	5.2				1.2	1.7	1.9
Wedge				15.1	11.7	6.6				17.8	15.0	9.2				2.3	2.0	1.6
Leeds all				15.9	10.8	6.4				16.3	13.0	8.3				2.2	2.2	1.7

Being Healthy

Data Source: NHS Leeds										DP: Various - Listed with each report			
Birth Data DP: C	3 year rolling average of births below 2.5kg % low birth weight babies					Number and rate of conceptions per 1000 15-17 year olds							
	2006-08			2007-09		2008-10		Number		Rate			
								June to May		2008-09 2009-10			
Cluster	6.4			6.9		7.2		Cluster		25	24	29	29
Wedge	8.8			8.6		8.5		Wedge		368	331	44	40
Leeds all	7.8			7.8		7.6		Leeds all		1220	1145	45	43
DP: C	% of women receiving a health and social care needs assessment at 12 weeks as a percentage of live births in the same year			DP: F			% Initiating breastfeeding April to March		% breastfeeding at 6 weeks April to March				
	2009	2010	2011	2009-10	2010-11	2009-10	2010-11						
Cluster	86.1	84.9	87.0	81.7	80.6	55.5	49.0						
Wedge	78.6	80.0	81.3	71.6	68.0	44.7	43.9						
Leeds all	81.6	82.9	84.0	67.6	65.1	40.4	39.3						
DP: C	Number of emergency admissions by age group 2007-11			Number of emergency admissions to hospital for injury, poisoning and certain other consequences of external causes by age group									
	0-4	5-10	11-18	0-4	5-10	11-18							
Cluster	712	199	452	81	60	164							
Wedge	9631	2721	5612	1033	791	2006							
Leeds all	29793	8247	18194	3419	2522	6711							
Immunisation Data DP: F	% of 2 year olds receiving vaccinations in quarter 3 for:						% of 5 year olds receiving vaccinations in quarter 3 for:						
	Diphtheria			MMR			Diphtheria			MMR			
	09-10	10-11	11-12	09-10	10-11	11-12	09-10	10-11	11-12	09-10	10-11	11-12	
Cluster	92	98	96	88	97	93	94	95	96	91	92	93	
Wedge	95	96	96	87	87	93	93	92	95	89	91	94	
Leeds all	96	96	97	86	88	94	95	94	96	91	91	95	

Data Source: National Child Measurement Programme												DP: A		
Obesity	Obesity in Reception						Obesity in Year 6							
	% Obese			% Obese or overweight			% Obese			% Obese or overweight				
	08-09	09-10	10-11	08-09	09-10	10-11	08-09	09-10	10-11	08-09	09-10	10-11		
Cluster	6.3	7.6	7.1	17.3	19.9	22.7	15.6	17.5	21.0	28.6	31.8	36.7		
Wedge	9.7	10.4	10.1	21.4	23.3	23.2	20.3	22.1	20.5	33.9	36.6	35.2		
Leeds all	9.4	10.2	9.7	21.7	23.7	23.4	20.3	20.7	20.0	34.3	35.1	34.3		
Obesity	Obesity in Reception			Obesity in Year 6										
	3 year average 2008-2011			3 year average 2008-2011										
	% Obese			% Obese or overweight			% Obese			% Obese or overweight				
Cluster	6.97			20.02			17.64			31.78				
Wedge	10.07			22.68			20.89			35.18				
Leeds all	9.77			22.96			20.32			34.56				

Stay Safe

Data Source: Children's Services					DP: Various - Listed with each report						
Number of LAC and Child protection plans	The number of children and young people looked after by the Local Authority - March based on home address before coming into care					based on placement address			The number of children with child protection plans - March		
	<i>DP: S</i>								<i>DP: S</i>		
	2011		2012		2012		2011		2012		
Cluster	9		12		15		9		SUPP		
Wedge	0		474		315		0		246		
Leeds all	1439		1454		1454		947		1019		
Number of Common Assessments (CAFs)					Social Care			Social Care Referrals		Requests for Service	
<i>DP: C</i>					<i>DP:A</i>					<i>DP:S</i>	
		2008	2009	2010	2011	2009	2010	2011	Feb 11 - Jan 12		
Cluster	14		26		32		19		498		
Wedge	143		307		344		268		8634		
Leeds all	457		849		1115		892		30539		
Number of Child and Adolescent Mental Health Services referrals											
<i>DP: S</i>											
		aged 11 and under			aged 12-18			total referrals			
September-October		2009-10		2010-11		2009-10		2010-11		2009-10 2010-11	
Cluster	5400		19		92		62		146 81		
Wedge	471		250		686		429		1157 679		
Leeds all	1767		1124		2976		1730		4743 2854		

Make a positive Contribution

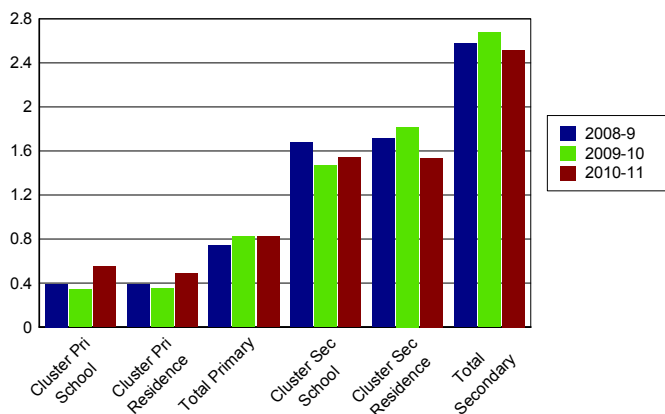
Data Source: West Yorkshire Police										<i>DP: C</i>	
Property Crime		Burglary dwelling		Burglary elsewhere		Criminal damage		Robbery		Vehicle crime	
Number of recorded crimes for:		10 11		10 11		10 11		10 11		10 11	
Cluster	229 163		31 76		177 139		22 10		115 110		
Wedge	2789 2404		1062 1234		3572 2902		370 323		2368 1919		
Leeds all	9508 8487		5681 5408		13599 10426		1297 1226		9168 7971		
Personal Crime						Drug Offences		Theft from person		Violent crime	
Number of recorded crimes for:						10 11		10 11		10 11	
Cluster					9 30		12 8		107 124		
Wedge					378 915		405 298		2375 2556		
Leeds all					1248 3192		2235 3034		11233 10896		
Domestic Violence Incidents		Number of incidents recorded with a domestic qualifier or disposition code on the Storm WYP incident recording system - 2011									
Cluster	235										
Wedge	4116										
Leeds all	14525										

Data Source: Youth Offending Service										<i>DP: A</i>	
Youth Offending		Number of Offenders				Number of Offences					
		07-08	08-09	09-10	10-11	07-08	08-09	09-10	10-11		
Cluster	39		25		24		21		111 67 55 48		
Wedge	780		515		405		439		1899 1454 901 883		
Leeds all	2741		2166		1522		1511		6331 4883 3134 3150		
April 2010 - March 2011 Number of offences by young offenders											
		Burglary	Breaches	Criminal Damage	Drugs Offences	Motoring and Vehicle	Other	Public Order	Theft and handling	Violence against the person	
Cluster	SUPP		SUPP		7		SUPP		5 5 SUPP 7 15		
Wedge	69		85		99		66		77 108 95 125 159		
Leeds all	291		270		328		204		218 358 282 612 587		

Data Source: School Census												DP: A
Attendance and persistent absence by percentage	Attendance			Authorised Absence			Unauthorised Absence			Persistent Absence 15%		
	08-09	09-10	10-11	08-09	09-10	10-11	08-09	09-10	10-11	08-09	09-10	10-11
Primary												
Cluster school	95	95	95	5	5	4	0.4	0.3	0.6	5.0	5.3	3.2
Cluster residence	95	95	95	5	5	4	0.4	0.4	0.5	4.4	4.6	3.4
Total primary	94	94	95	5	5	4	0.7	0.8	0.8	5.9	5.5	4.3
Secondary												
Cluster school	93	94	94	5	5	4	1.7	1.5	1.5	8.8	7.9	7.2
Cluster residence	93	93	94	5	5	5	1.7	1.8	1.5	9.4	9.0	7.7
Total secondary	92	92	92	6	6	5	2.6	2.7	2.5	13.0	13.1	11.2

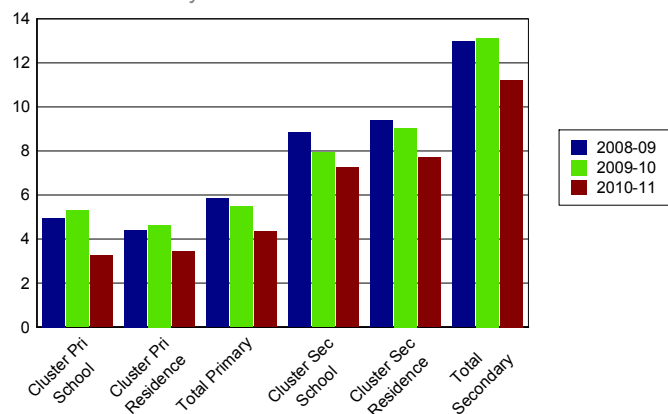
% Unauthorised Absence

2008-2011



% Persistent Absence

by 15% measure 2008-2011



Data Source: Children's Services												DP: A
Exclusions	Fixed Term Exclusions						Permanent Exclusions					
	Number			Rate per thousand			Number			Rate per thousand		
Primary	08-09	09-10	10-11	08-09	09-10	10-11	08-09	09-10	10-11	08-09	09-10	10-11
Cluster school	3	5	1	1.8	2.9	0.6	0	0	0	0.0	0.0	0.0
Cluster residence	4	7	1	2.1	3.7	0.6	0	0	0	0.0	0.0	0.0
Total primary	467	371	455	7.7	6.0	7.3	2	2	2	0.0	0.0	0.0
Secondary												
Cluster school	113	136	213	56.0	66.7	104.7	0	0	0	0.0	0.0	0.0
Cluster residence	55	67	93	63.8	80.9	102.4	0	0	0	0.0	0.0	0.0
Total secondary	4350	4286	3806	93.6	93.1	83.2	52	57	44	1.1	1.2	1.0

Enjoy and Achieve

Data Source: Keypas and DFE performance tables
DP: A
Foundation Stage Profile Data The percentage of pupils achieving a good level of development (78+ points overall and 6+ points in all PSE and CCL strands)

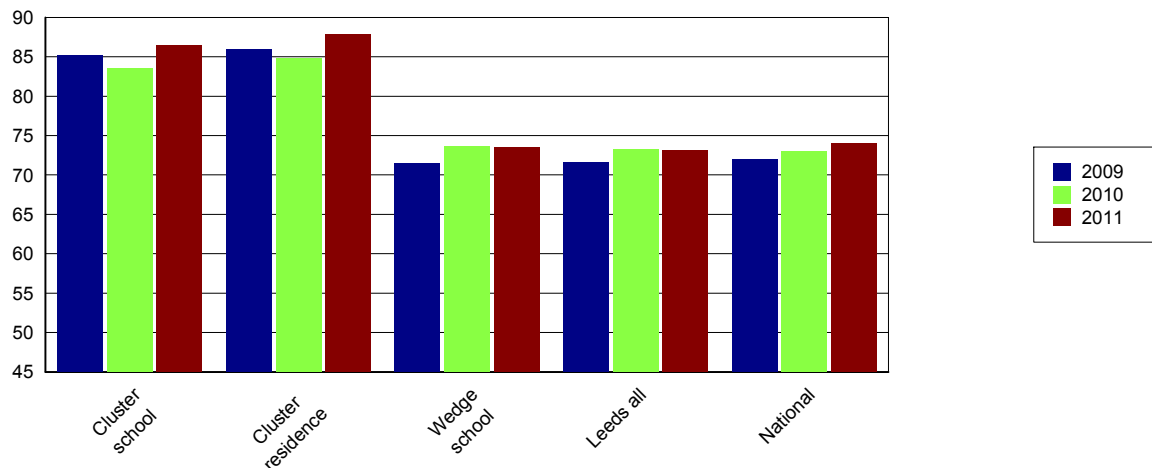
	2008	2009	2010	2011
Cluster school	59	55	63	72
Cluster residence	64	55	63	71
Leeds all	47	51	53	58

KS2 Data DP: A	English 4+			English 5+			Maths 4+			Maths 5+			English & Maths 4+		
	09	10	11	09	10	11	09	10	11	09	10	11	09	10	11
Cluster school	91	87	90	46	36	36	88	86	89	48	39	43	85	83	86
Cluster residence	91	89	91	43	41	40	88	87	89	49	40	52	86	85	88
Wedge school	78	78	80	31	31	30	78	79	78	35	32	33	71	74	74
Leeds all	79	79	81	28	31	32	77	79	78	33	31	32	72	73	73
National	80	80	82	29	33	29	79	79	80	35	34	35	72	73	74

KS2 Data - Expected progress	Made 2 levels of progress in English		Made 2 levels of progress in Maths	
	Number of pupils	Percentage	Number of pupils	Percentage
Cluster school	180	91.8	189	94.5
Wedge school	1865	90.5	1804	87.2
Leeds all	6334	88.6	6087	85.0
National		84.0		83.0

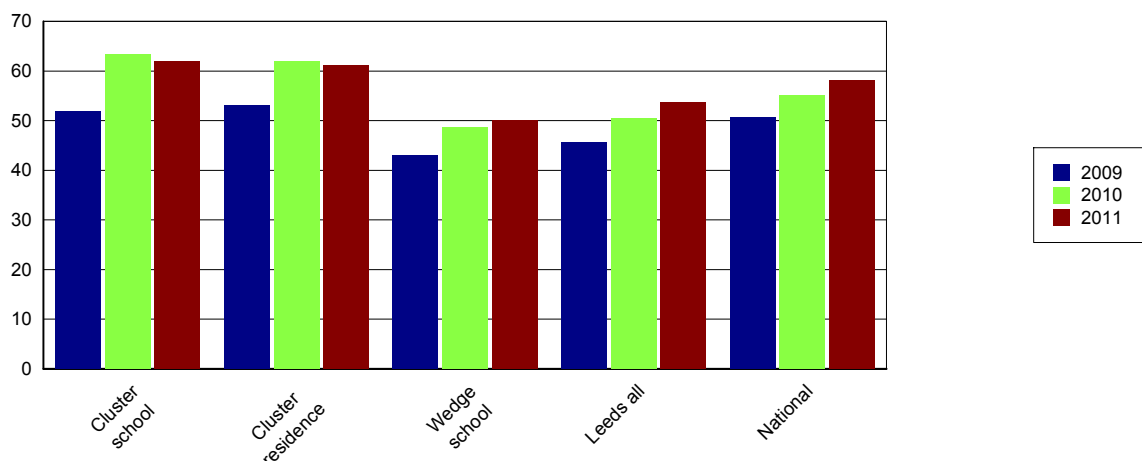
Percentage of English and Maths

Level 4+



Data Source: EPAS and DFE performance tables											DP: A		
The results are for GCSE & equivalent qualifications. The calculation of achieving no qualifications includes all qualifications													
KS4 Data	% of 5+ A*-C			% of 5+ A*-C inc Eng & Maths			% English Baccalaureate	% of 5+ A*-G			% achieving no qualifications		
	09	10	11	09	10	11		09	10	11	09	10	11
Cluster school	78	90	91	52	63	62	26	97	99	98	0		
Cluster residence	77	88	90	53	62	61	20	96	96	96	3	0	1
Wedge school	67	78	84	43	49	50	12	92	96	96	2	1	0
Leeds all	67	76	82	46	51	54	13	91	94	94	2	2	1
National	70	76	81	51	55	58	15	94	95	95	1 1		

Percentage 5 A*-C Including English and Maths



Achieve Economic Well Being

Key: Not in Employment, Education or Training (NEET), In Employment, Education or Training (EET), in Full time Education (FE)													
Data Source: November destination survey													DP: S
NEET/FE		Number of NEET			% NEET			Number of FE			% FE		
		2009	2010	2011	2009	2010	2011	2009	2010	2011	2009	2010	2011
Cluster school	Year 11	23	SUPP	13	6	SUPP	4	315	337	325	84	95	91
	Year 12	SUPP	SUPP	SUPP	SUPP	SUPP	SUPP	104	113	115	92	90	95
	Year 13	SUPP	SUPP	SUPP	SUPP	SUPP	SUPP	69	74	79	80	85	85
Cluster residence	Year 11	11	5	5	6	2	3	171	206	170	88	96	94
	Year 12	SUPP	SUPP	SUPP	SUPP	SUPP	SUPP	111	85	99	96	91	95
	Year 13	SUPP	SUPP	SUPP	SUPP	SUPP	SUPP	60	84	60	85	84	88
Leeds all	Year 11	646	393	357	8	5	5	6703	7194	6564	80	87	87
	Year 12	132	67	115	3	2	3	3436	3476	3550	90	93	93
	Year 13	121	135	120	5	4	4	2067	2350	2593	78	76	84

Data Source: Integrated Youth Support Service										DP: O	
16-18 NEET and EET Nov 2011 to Jan 2012	NEET		EET		Not Known		Other Activity				
	Number	%	Number	%	Number	%	Number	%			
Cluster	28	4.5	589	95.1	SUPP	SUPP	SUPP	SUPP			
Wedge	493	7.5	6006	91.5	66	1.0	16	0.2			
Leeds all	1538	7.0	20170	91.7	343	1.6	58	0.3			

Please Note: Leeds totals for 16-18 NEET will not match publicised totals as published totals include a proportion of those whose status has expired